



The 18th Science Council of Asia Conference  
 “Role of Science for Society: Strategies towards SDGs in Asia”

# PROGRAM OF ACTIVITIES

5th-7th December 2018  
 Science Council of Japan (SCJ)  
 Tokyo, Japan



Organized by



# Themes



## 1. Energy, Natural Resources and Built Environment



Access to affordable, reliable and sustainable energy  
Sustainable management and efficient use of natural resources  
Smart cities and zero energy buildings

## 2. Aging Society, Health and Medical Care



Access to quality essential health-care services and affordable essential medicines and vaccines for all  
End preventable deaths of newborns and children  
Healthy city and housing  
Inclusive design and technology for physically handicapped people

## 3. Biodiversity and Sustainable Use of Biological Resources



Sustainable use of the oceans, seas and marine resources  
Sustainable use of terrestrial and freshwater ecosystems  
Fair and equitable sharing of the benefits from the utilization of genetic resources

## 4. Cities, History and Cultural Heritage



Access for all to adequate, safe and affordable housing and basic services and upgrade slums  
Protect and safeguard the world's cultural heritage  
Adverse environmental impact of cities

## 5. Disaster Risk Reduction



Reliable, sustainable and resilient infrastructure  
Strengthen resilience and adaptive capacity to climate-related hazards and natural disasters

## 6. Gender



Ensure women's full and effective participation and equal opportunities for leadership  
Reforms to give women equal rights to economic resources

## 7. Poverty, Inequalities and Immigrants



Ensure the equal rights to economic resources for the poor and the vulnerable  
Build the resilience of the poor and reduce their exposure and vulnerability to climate-related extreme events and other economic, social and environmental shocks and disasters  
Facilitate orderly, safe, regular and responsible migration and mobility of people

## 8. Education



Ensure that all girls and boys complete free, equitable and quality primary and secondary education  
Gender disparities in education  
Ensure that all learners acquire the knowledge and skills needed to promote sustainable development

## 9. Economy



Economic productivity through diversification, technological upgrading and innovation  
Decent work for all women and men  
Labour rights and safe and secure working environments for all workers, including migrant workers

## 10. Water and Food



Universal and equitable access to safe and affordable drinking water for all  
Access to adequate and equitable sanitation and hygiene for all  
Sustainable agriculture

# Program at a Glance

**Theme:** "Role of Science for Society: Strategies towards SDGs in Asia"  
**Organizers:** Scienc Council of Japan, Science Council of Asia  
**Date:** 5th-7th December 2018  
**Venue:** Science Council of Japan

## Day 1

Session	A	B	C	D
Venue	Assembly Hall	Conference Room 5-A (5F)	Conference Room 5-C (5F)	Council Room (2F)
<b>Opening Ceremony</b>				
9:10	<b>Welcome Remarks</b> President of SCJ <b>Opening Remarks</b> President of SCA (TBD) <b>Congratulatory Address</b> Guest of Honor			
9:30				
<b>Keynote Speech</b>				
9:30	<b>Keynote Speech 1</b>			
10:30				
<b>Break 10:30 -11:00</b>				
11:00		[Parallel Session B1] Theme2 (1)	[Parallel Session C1] Theme5 (1)	[Parallel Session D1] Theme3
12:30				
<b>Lunch 12:30 -14:00</b>				
<b>Poster Session 13:00-14:00 (at Conference Room 6-A (6F))</b>				
14:00		[Parallel Session B2] Theme7	[Parallel Session C2] Theme8	<b>SCA Management Board Meeting</b> (SCA Management Board Members only)
15:30				
<b>Coffee Break 15:30 -16:00</b>				
16:00		[Parallel Session B3] Theme 4	[Parallel Session C3] Theme 1 (1)	<b>SCA Joint Project Workshop</b>
17:30				
<b>Break 17:30 -18:30</b>				
<b>Reception organized by SCJ (Invitation only) 18:30-20:30</b>				
<b>Adjourn 20:30</b>				

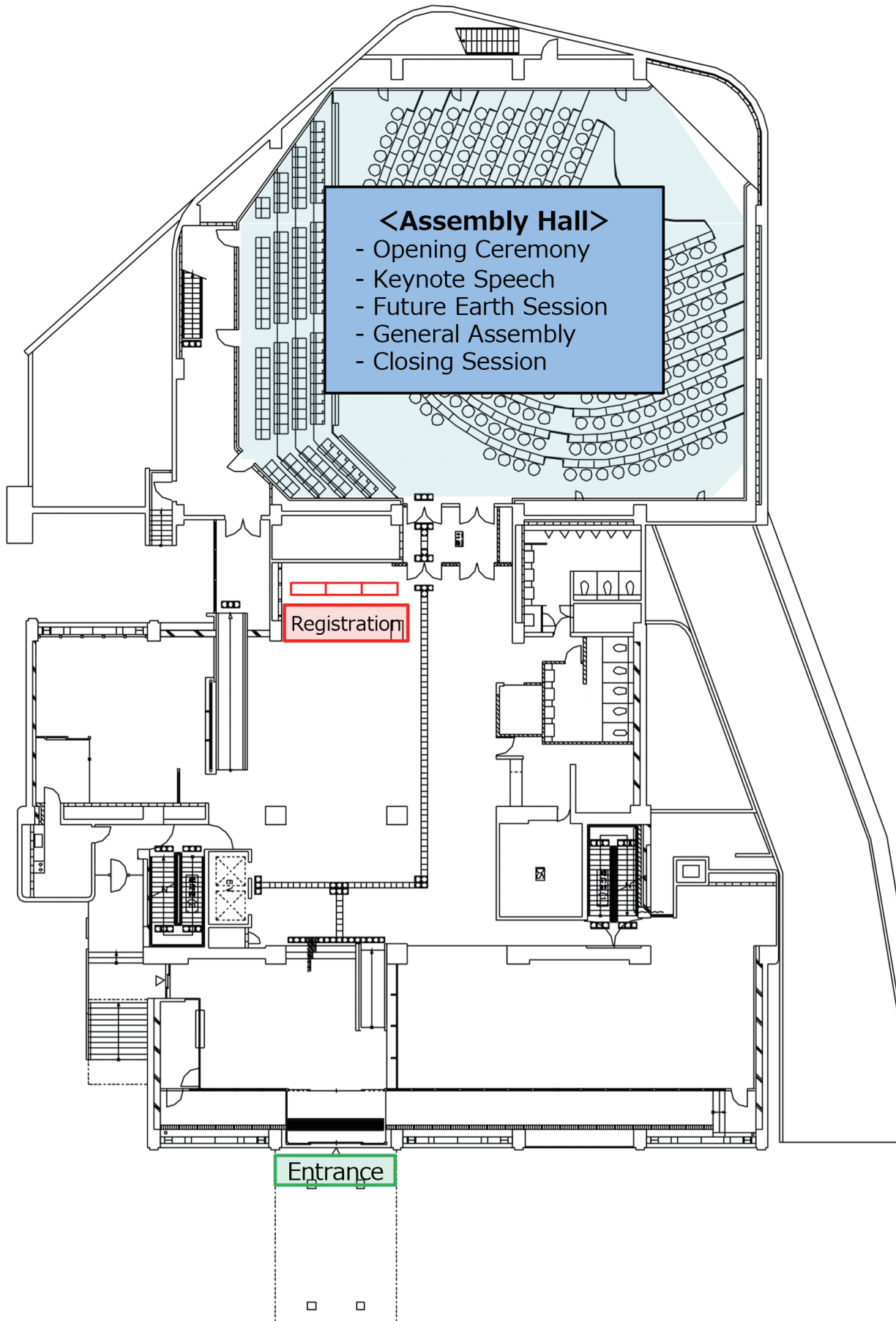
## Day 2

<b>Keynote Speech</b>				
9:00	<b>Keynote Speech 2</b>			
10:30				
<b>Break 10:30 -11:00</b>				
11:00		[Parallel Session B4] Theme 9	[Parallel Session C4] Theme 10	[Parallel Session D2] Theme 6
12:30				
<b>Lunch 12:30 -14:00</b>				
<b>Poster Session 13:00-14:00 (at Conference Room 6-A (6F))</b>				
14:00	<b>Future Earth Sessions</b>			
15:30				
<b>Coffee Break 15:30 -16:00</b>				
16:00		[Parallel Session B5] Theme1 (2)	[Parallel Session C5] Theme 5 (2)	<b>Committee of Science and Society and Young Academy of Japan Session</b>
17:30				
<b>Adjourn 17:30</b>				

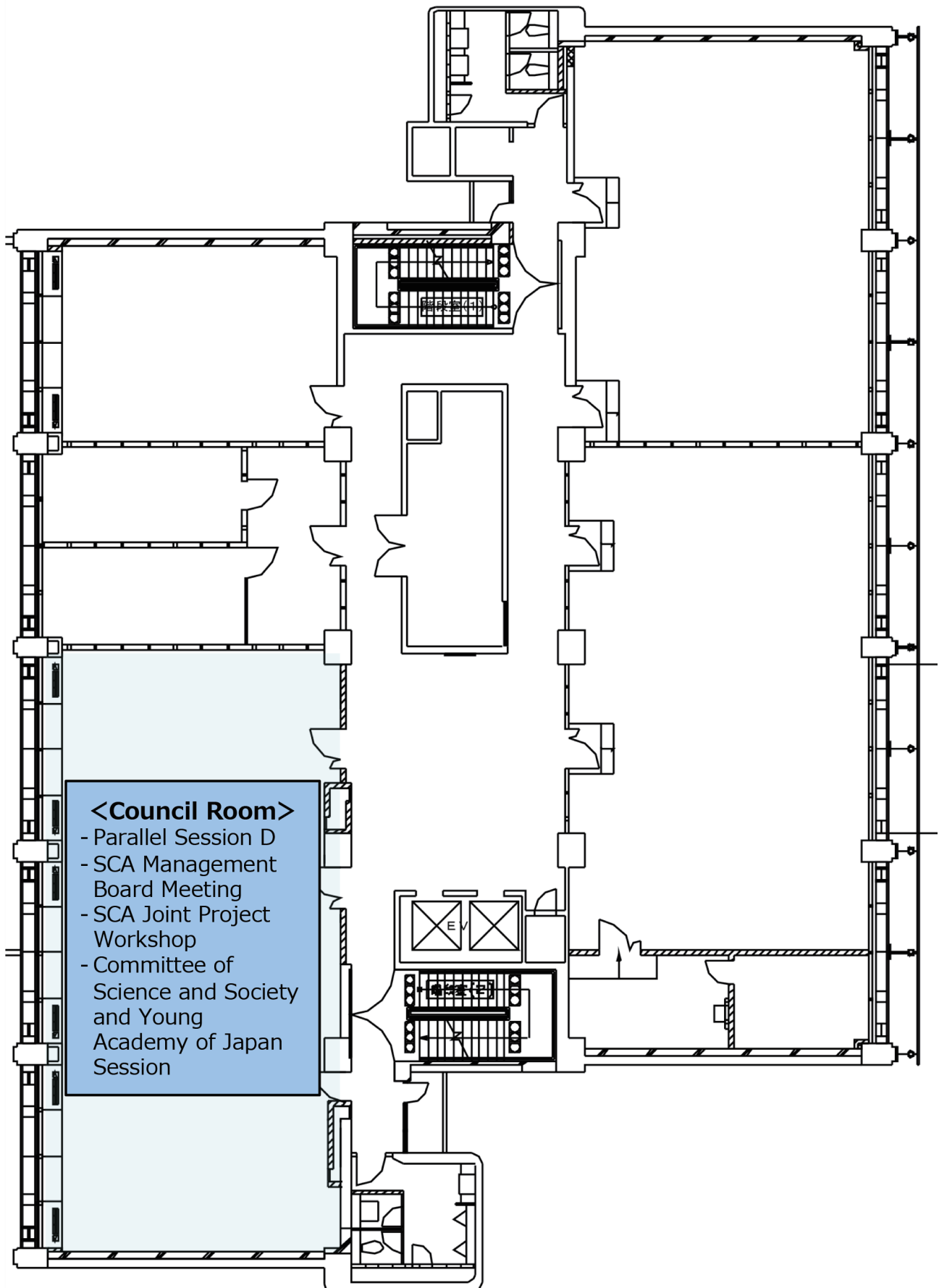
## Day 3

9:00	<b>General Assembly</b> (SCA member organizations only)	[Parallel Session B6] Theme 1 (3)	[Parallel Session C6] Theme 5 (3)	[Parallel Session D3] Theme 2 (2)
10:30				
<b>Break 10:30 -11:00</b>				
<b>Closing Session</b>				
11:00	<b>Declaration of SCA Statement</b> President of SCJ <b>Greeting from President-Elect</b> <b>Flag Ceremony</b>			
12:00				
<b>Lunch 12:00 -13:00 * for study tour participants only</b>				
13:00	<b>Study Tour (international participants only)</b>			
18:00				
<b>Adjourn 18:00</b>				

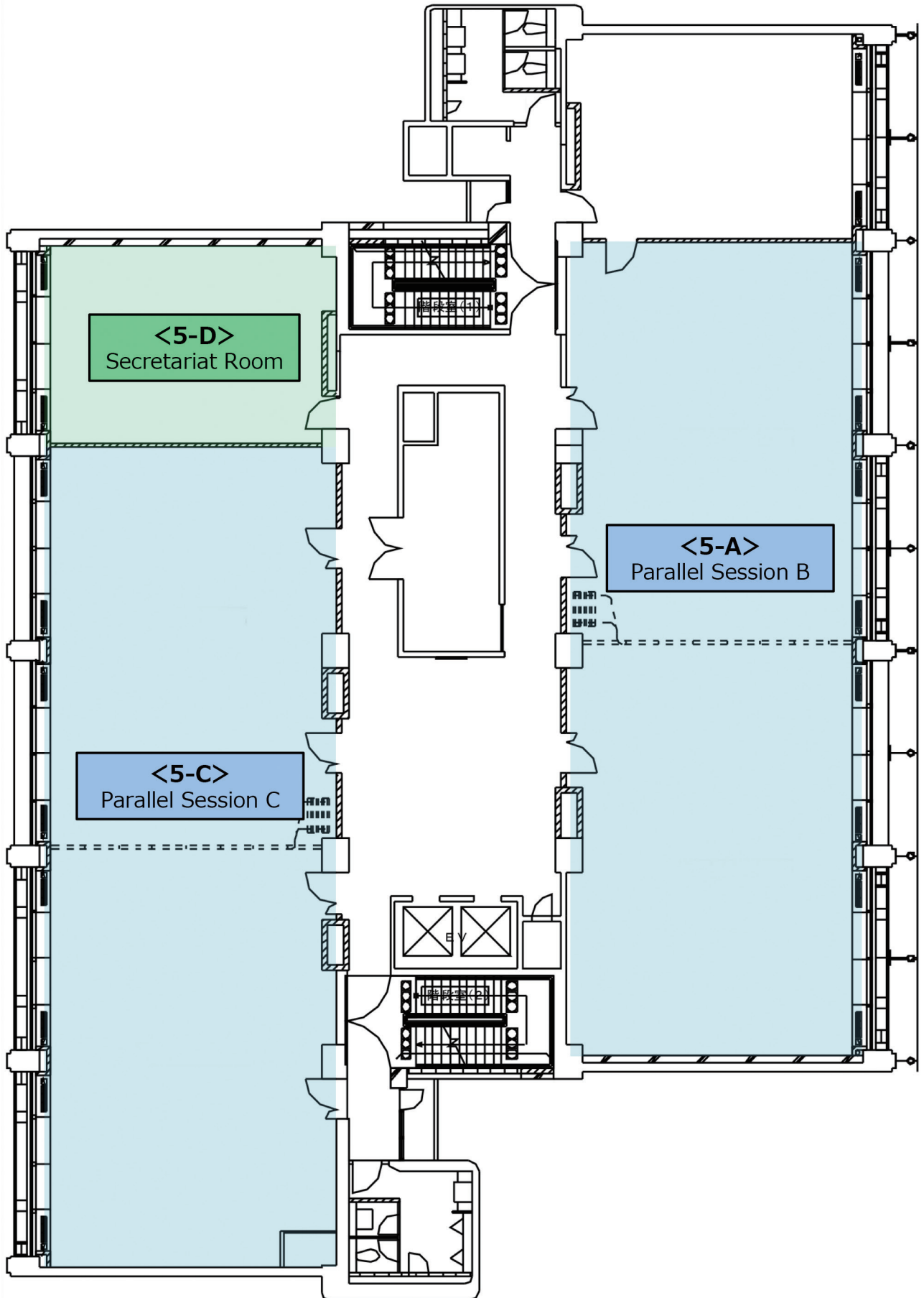
# Floor Map [1F]



## Floor Map [2F]

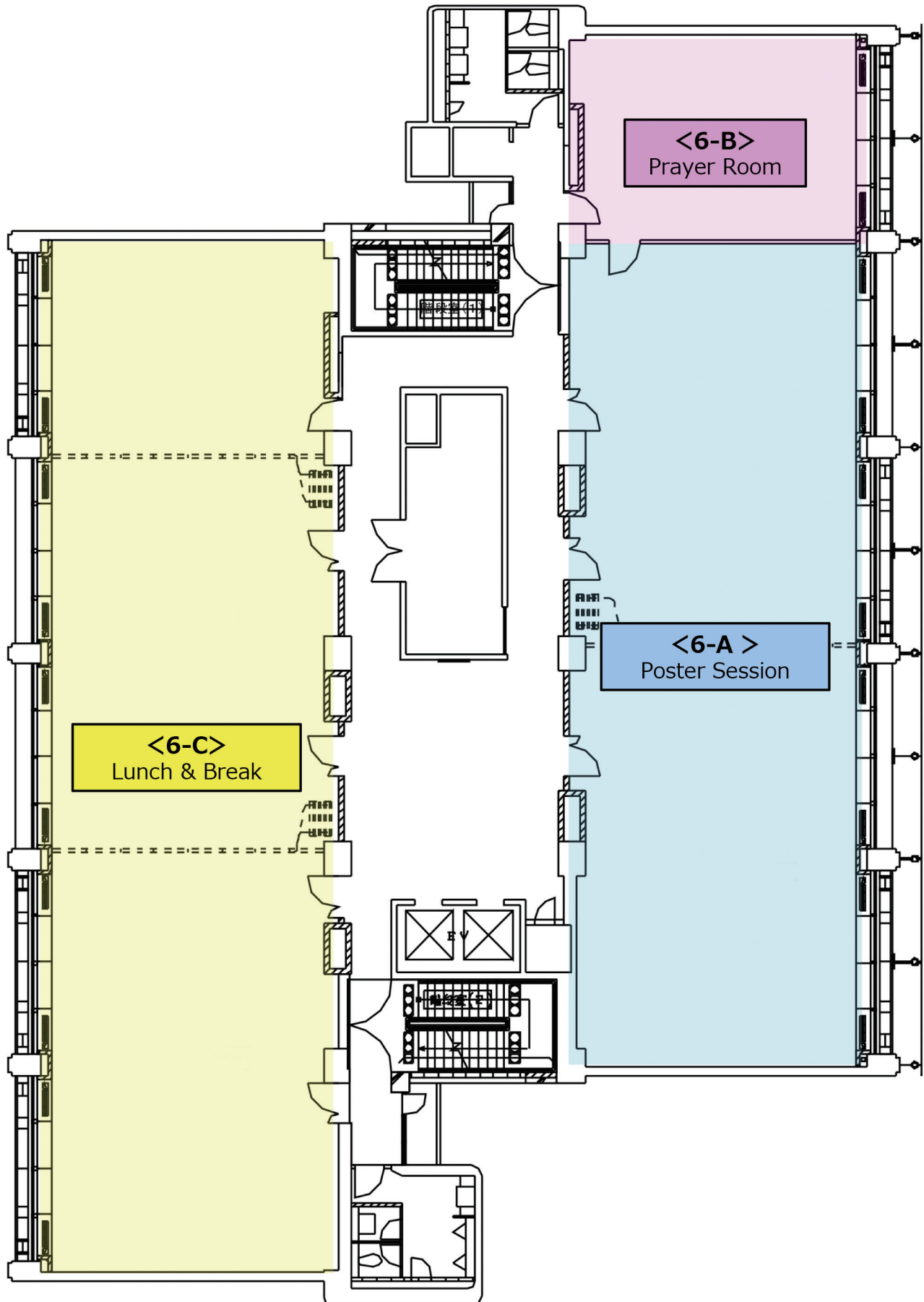


# Floor Map [5F]





# Floor Map [6F]



# Day 1

## Wednesday, 5th December

8:00 - **Registration**

---

9:10 - 9:30 **Opening Ceremony @ Assembly Hall (1F)**

---

MC: **Prof. Hiroshi Yoshino**  
Secretary General / Treasurer of SCA  
Professor Emeritus  
Tohoku University, Japan

### Welcome Remarks

**Dr. Juichi Yamagiwa**  
President, Science Council of Japan  
President, Kyoto University

### Opening Remarks

**Prof. Dr. Quazi Abdul Fattah**  
President, Science Council of Asia  
President, Bangladesh Academy of Sciences  
(Prof. Naiyyum Choudhury, Vice-President of BAS, reads a message for Prof. Fattah)

### Congratulatory Address by the Guest of Honor

**Mr. Takuya Hirai**  
Minister of State for Science and Technology Policy

9:30 - 10:30 **Keynote Speech 1 @ Assembly Hall (1F)**

---

MC: **Prof. Koji Miyazaki**  
Professor Emeritus  
Tokyo University of Foreign Studies, Japan

**Prof. Leena Srivastava**  
Co-chair of the FE Advisory Committee

**Prof. Kazuhiko Takeuchi**  
Vice President, Science Council of Japan

10:30 - 11:00 **Break**

---

**Parallel Session B1 [Theme 2 (1)] @ Conference Room 5-A (5F)**

Co-Chairs: **Prof. Kaoru Arakawa**

Professor

Dean of the School of Interdisciplinary Mathematical Sciences,  
Meiji University, Japan

**Prof. Christina Aquino Binag**

Professor of Chemistry (Vice President of SCA, Former President of  
NRCP), University on Santo Tomas, Philippines

**Development of Predictive PBPK Model of Extended-Release  
Metformin Tablets**

**Frances Lois Ucab Ngo**

Project Development Officer, University of the Philippines Manila, Philippines

**In vitro inhibitory activities of selected Philippine plant extracts on  
carbohydrate-degrading enzymes linked to type-2 diabetes**

**Erna Arollado**

Director, Institute of Pharmaceutical Sciences, National Institutes of Health, University of  
the Philippines Manila, Philippines

**The Application of Theory of Planned Behavior in Peer's Reproductive  
Health Promoters**

**Nurlaela Widyarini**

Lecturer, Faculty of Psychology, Muhammadiyah University of Jember, Indonesia

**Artificial Nerve Guidance Conduits Based on Polycaprolactone /  
Polyaniline / Collagen Type 1 Composite Nanofibers Using Rat  
Sciatic Nerve Injury Model**

**Christina Aquino Binag**

Professor of Chemistry (Vice President of SCA, Former President of NRCP), University on  
Santo Tomas, Philippines

**2 minutes presentation by poster presenters (8)**

## Parallel Session C1 [Theme 5 (1)] @ Conference Room 5-C (5F)

Chair: **Prof. Toshio Koike**

Director

International Centre for Water Hazard and Risk Management (ICHARM), Japan

### **Understanding Disaster Risk: The Role of Science and Technology**

**Kenji Satake**

Professor, the University of Tokyo, Japan

### **Floods and Sediment Disasters in Western Japan in July 2018**

**Toshio Koike**

Director, International Centre for Water Hazard and Risk Management (ICHARM), Japan

### **Disaster Risk Governance and Transdisciplinary Approach for Building Societal Resilience to Disasters -Asian Civil Engineering Coordination Council Activity-**

**Kenichi Tsukahara**

Professor, Kyushu University, Japan

### **2 minutes presentation by poster presenters (7)**

## Parallel Session D1 [Theme 3] @ Council Room (2F)

Chair: **Hiroshi Matsumoto, PhD.**

Professor

Executive Officer, University of Tsukuba Dean, Faculty of Life and Environmental Sciences Tsukuba, Japan

### **Japan's Forest Diplomacy and International Governance of Sustainable Development**

**Takashi Fujiwara**

Representative, Japan Sustainable Forest Forum, Japan

### **Exploring decentralized bioenergy system supported by local bioresources in Japan**

**Chun Sheng Goh**

JSPS-UNU Postdoctoral Fellow, United Nations University Institute for the Advanced Study of Sustainability (UNU-IAS)

## **Multidisciplinary and Integrated Approaches for Mainstreaming Biodiversity through Strengthening Regional and Global Partnership to Support SDGS**

**Eddy Sudarmonowati**

Deputy Chair for Life Sciences, Indonesian Institute of Sciences, Indonesia

## **The Molecular Phylogeny of Philippine Ophiorrhiza L. (Ophiorrhizaceae-Rubiaceae): a Proposal on Its Infrageneric Classification and Four New Endemic Species**

**Niña Kathryn Goles Alfeche**

MS Biological Sciences; Science Research Specialist 1, the Graduate School, University of Santo Tomas, Philippines

## **The use of local Indonesian coconut water for bacterial cellulose-silver modified films and its antibacterial activities for wound dressing applications**

**Anastasia Wheni Indrianingsih**

Researcher, Indonesian Institute of Sciences, Research Unit for Natural Product Technology, Indonesia

**2 minutes presentation by poster presenters (2)**

**12:30 - 14:00 Lunch @ Conference Room 6-C (6F)**

---

**13:00 - 14:00 Poster Session @ Conference Room 6-A (6F) (Theme 2, 3, 5)**

---

**14:00 - 15:30 Parallel Sessions**

---

### **Parallel Session B2 [Theme 7] @ Conference Room 5-A (5F)**

Chair: **Prof. Koji Miyazaki**

Professor Emeritus

Tokyo University of Foreign Studies, Japan

## **Policies and Programs for Rural Poverty Alleviation in the Bangladesh Context**

**Mesbahuddin Ahmed**

Fellow and Secretary, Bangladesh Academy of Sciences, Bangladesh

## **Indirect Policies for Poverty Alleviation through Education Systems in Developing Countries**

**Yui Nakamura**

Associate professor, Faculty of Economics Fukuoka University, Japan

## **Issues for persons with disabilities in Japan to achieve SDGs : Poverty, Employment, and Education using National Survey**

**Kai Seino**

Section Chief, Research Institute National Rehabilitation Center for Persons with Disabilities, Japan

## **Transition in Welfare Regime and Migration in East Asia**

**Wako Asato**

Associate Professor, Kyoto University, Japan

## **Parallel Session C2 [Theme 8] @ Conference Room 5-C (5F)**

Chair: **Prof. Nobuko Nagase**

Professor

Ochanomizu University, Japan

## **Academic Institutions Mobility in the ASEAN Region through Sharing of Best Practices in Sustainable Development**

**Lilito Dacoco Gavina**

Director, Partnership and Special Projects, Don Mariano Marcos Memorial State University (DMMMSU), Philippines

## **Sustainability in Education Towards Global Citizenship**

**Sharifah Zarina Syed Zakaria**

Associate Professor, Universiti Kebangsaan Malaysia, Malaysia

## **Exploring Strategies for Sustainable Financing of Early Childhood Care and Education: Evidence from Cambodia, Lao PDR and Viet Nam**

**Keiichi Ogawa**

Professor / Department Chair, Kobe University, Graduate School of International Cooperation Studies, Japan

## **Promoting Sustainability through Formal and Nonformal Collaborative Education**

**Jane Singer**

Associate Professor, Graduate School of Global Environmental Studies, Kyoto University, Japan

## **Gender Equality in Islamic Boarding School in Indonesia**

**Oki Dermawan Djusar**

Lecturer, Raden Intan Islamic State University, Indonesia

**2 minutes presentation by poster presenters (3)**

---

### **14:00 - 15:30 SCA Management Board Meeting @ Council Room (2F)**

SCA Management Board Members only

---

### **15:30 - 16:00 Coffee Break @ Conference Room 6-C (6F)**

---

### **16:00 - 17:30 Parallel Sessions**

#### **Parallel Session B3 [Theme 4] @ Conference Room 5-A (5F)**

Chair: **Prof. Matori Yamamoto**

Professor

Faculty of Economics, Hosei University, Japan

## **Urban Conservation and Historical Heritage for the Revival of Aleppo**

**Kosuke Matsubara**

Associate Professor, Tokyo Institute of Technology, Japan

## **Safeguarding and Sustainable Development Goals of Intangible Cultural Heritage**

**Dawnhee Yim**

Member, the National Academy of Sciences, Republic of Korea

## **Localizing SDG Indicators for Japanese Local Governments**

**Shun Kawakubo**

Associate Professor, Hosei University, Japan

**2 minutes presentation by poster presenters (2)**

## Parallel Session C3 [Theme 1 (1)] @ Conference Room 5-C (5F)

Chair: **Shinichi Tanabe**

Professor

Department of Architecture, Waseda University, Japan

### **Off-Grid Housing Development Towards the Sustainable Society in 2050 in India**

**Ben Nakamura**

Principal, Ben Nakamura and Associates, Inc., Japan

### **The Role and Opportunities of Solar Home System to Support Green Energy for Tourism in Bunaken Island Indonesia**

**Meita Rumbayan**

Researcher, Sam Ratulangi University, Indonesia

### **Thermal Comfort and Productivity for Zero Energy Building**

**Shinichi Tanabe**

Professor, Department of Architecture, Waseda University, Japan

### **Study on Indoor Thermal Environment and Energy use in Different Ecological Region of Nepal**

**Tika Ram Pokharel**

Ph.D. Student, Tokyo City University, Japan

### **2 minutes presentation by poster presenters (11)**

---

## **16:00-17:30 SCA Joint Project Workshop @ Council Room (2F)**

### **Establishment of Environmental Conservation Platform of Tonle Sap Lake**

**Prof. Chihiro Yoshimura**

Associate Professor

Tokyo Institute of Technology, School of Environment and Society, Japan

**Prof. Om Romny**

Director General

Institute of Technology of Cambodia (ITC), Cambodia



## **Producing Biomass Energy and Material through Revegetation of Deteriorated Grasslands in Indonesia**

**Prof. Toshiaki Umezawa**

Professor

Research Institute for Sustainable Humanosphere, Kyoto University, Japan

## **Implementation of Disaster Resilient City Through SATREPS Project in Myanmar -Development of a Comprehensive Disaster Resilience System and Collaboration Platform in Myanmar-**

**Prof. Kimiro Meguro**

Professor

Institute of Industrial Science, the University of Tokyo, Japan

## **Future of Ocean Sustainability from Asia and Pacific Perspective**

**Prof. Mitsuo Uematsu**

Emeritus Professor

Atmosphere and Ocean Research Institute, the University of Tokyo

**Prof. Lourdes J Cruz**

Chair, Philippines NC of FE, National Academy of Science and Technology of Philippines

**17:30-18:30 Break**

---

**18:30-20:30 Reception organized by SCJ**

---

BRASSERIE PAUL BOCUSE Le Musée  
The National Art Center, Tokyo 3F  
(Next to the Science Council of Japan)

# Day 2

## Thursday, 6th December

8:30 - **Registration**

---

9:00 - 10:30 **Keynote Speech 2 @ Assembly Hall (1F)**

---

MC: **Prof. Koji Miyazaki**  
Professor Emeritus  
Tokyo University of Foreign Studies, Japan

**Mr. Masaya Futamiya**  
Chair of Committee on Corporate Behavior & Social Responsibility, Keidanren  
Director - Chairman  
Sompo Japan Nipponkoa Insurance Inc.

**Prof. Om Romny**  
Director General  
Institute of Technology of Cambodia (ITC)

**Prof. Teruo Kishi**  
Science and Technology Advisor to the Minister for Foreign Affairs of Japan

10:30 - 11:00 **Break**

---

11:00 - 12:30 **Parallel Sessions**

---

### Parallel Session B4 [Theme 9] @ Conference Room 5-A (5F)

Chair: **Prof. Nobuko Nagase**  
Professor  
Ochanomizu University, Japan

#### **The Sustainable Development Goals (SDGs) and SNA/SEEA as the Basis for Integrated Statistical Systems**

**Keiji Ujikawa**  
Professor, Yokohama National University, Japan

#### **Sharing Housework between Husbands and Wives: How to Improve Marital Satisfaction for Working Wives in Japan**

**Emiko Usui**  
Associate Professor, Hitotsubashi University, Japan

## **Effective Strategy To Increase Internet-User Traffic On Intellectual Property Website (Case Study: Indonesian Institute Of Sciences)**

**Harini Yaniar**

Head of IP Valuation Sub division, Center for Innovation, Indonesian Institute of Sciences, Indonesia

## **A Research on Japanese Entrepreneur in ASEAN and their Innovation: Case study in Thailand**

**Hideshi Sawaki**

Professor Extraordinary, Asia University, Japan

## **Product Planning Methods for BOP, Introduction to Smokeless Cooking Stove in Rural Myanmar**

**Motohiro Kurokawa**

Professor, Takasaki City University of Economics, Japan

## **Towards the Improvement of Income Levels of Small Holders of Natural Rubber in Cambodia - The Establishment of Information Transfer System -**

**Nobuo Hirohata**

Professor, Yamaguchi University, Japan

## **2 minutes presentation by poster presenters (3)**

### **Parallel Session C4 [Theme 10] @ Conference Room 5-C (5F)**

Chair: **Dr. Sakae Shibusawa**

Professor

Graduate School of Agriculture, Tokyo University of Agriculture and Technology, Japan

## **Addressing and Localizing Sustainable Development Goals through Grassroots-Based School-Plus-Home Gardens in the Philippines**

**Blesída Macasaet Calub**

University Researcher, Agricultural Systems Institute (ASI), University of the Philippines Los Baños, Philippines

## **Identifying the Water Poor Households in Urban India: An Insight from the NSS Data**

**Ranjeeta Mishra**

Postdoctoral fellow, United Nations University, Japan

## **Sustainable Way of Treating Groundwater Polluted with Arsenic, Iron and Ammonium by a Combination of Biological Filtration and One-Stage Nitritation - Anammox Process**

**Yoko Fujikawa**

Associate Professor, Institute for Integrated Radiation and Nuclear Science, Kyoto University, Japan

## **Health Risk Assessment of Lead Pollution (Pb) in Green Shells (*Perna viridis*) at Cilincing**

**Anna Rejeki Simbolon**

Researcher, Research Center for Oceanography, Indonesian Institute of Sciences (LIPI), Indonesia

## **Reusing Treated Municipal Wastewater for Crop Irrigation in South Korea**

**Seung Woo Park**

Member, the National Academy of Sciences, Republic of Korea

## **Advancement of Asian Cassava Molecular Breeding towards SDGs**

**Motoaki Seki**

Team Leader, RIKEN CSRS, Japan

## **2 minutes presentation by poster presenters (2)**

### **Parallel Session D2 [Theme 6] @ Council Room (2F)**

Co-chairs: **Prof. Matori Yamamoto**

Professor

Faculty of Economics, Hosei University, Japan

**Prof. Ni Ni Hlaing**

Member of MAAS, Head of English Department, Dean of Faculty of Humanities and Social Sciences of Mandalay University of Distance Education (MUDE), Ministry of Education of Myanmar, Myanmar Academy of Arts and Science (MAAS), Myanmar

## **Challenges Faced by Higher Education Female Leaders in Myanmar**

**Ni Ni Hlaing**

Member of MAAS, Head of English Department, Dean of Faculty of Humanities and Social Sciences of Mandalay University of Distance Education (MUDE), Ministry of Education of Myanmar, Myanmar Academy of Arts and Science (MAAS), Myanmar

## **Promoting Gender Equality in the Japanese Academia: How to Improve Academic Environments from the Perspective of SDG5**

**Kumie INOSE**

Professor, Konan University, Japan

## **Sexual Harassment in Japanese Academic Community**

**Hiroko Goto**

Dean / Professor, Chiba University Law School, Japan

## **Engendering Value Chains for Inclusive Prosperity: The Case of Tuna Fisheries in the Philippines**

**Marieta Bañez Sumagaysay**

Executive Director, National Research Council of the Philippines, Department of Science of Technology, Philippines

## **Women's Participation in Environmental Protection and Sustainable Agricultural Development: A Micro-level Study of Two Villages in Bangladesh and Japan**

**Tofael Ahamed**

Associate Professor, Faculty of Life and Environmental Science, University of Tsukuba, Japan

## **From Cosmetic Multiculturalism to Caring Multiculturalism: Toward Social Inclusion of Migrant Children and Women in Japan**

**Aya Kitamura**

Associate Professor, F Tsuda University, Japan

**12:30 - 14:00 Lunch**

---

**13:00 - 14:00 Poster Session @ Conference Room 6-A (6F) (Theme 1, 4, 8, 9, 10)**

---

**Co-Conveners:**

**Prof. Tetsuzo Yasunari**

Member of FE Advisory Committee, Chair of NC-FE / SCJ, Vice-Chair of Japan NC for FE, DG of RIHN

**Prof. Hein Mallee**

Director of Asia Regional Centre of FE, Prof. of RIHN

**Participants (oral presenters and panel members):**

**Prof. Leena Srivastava**

Keynote speaker of the plenary session of SCA; Co-chair of the FE Advisory Committee

**Dr. Mazlan Othman**

Director of ISC Regional Office of Asia & Pacific

**Prof. Mitsuo Uematsu**

Member of Regional Committee for ISC. FE Ocean KAN, Prof. Emeritus of University of Tokyo

**Dr. Shin-Chun Candice Lung**

Chair, Taiwan NC of FE, Academia Sinica

**Prof. Soonchang Yoon**

Chair of Korean NC for FE, Vice-President of Korean Academy of Science and Technology

**Prof. Chuluun Togtokh**

Chair, Mongolian National Committee of FE, Prof. of Mongolian National University

**Prof. Lourdes J Cruz**

Chair, Philippines NC of FE, National Academy of Science and Technology of Philippines

**Prof. Makoto Taniguchi**

FE Nexus KAN, Prof. of RIHN

**Prof. Kazuhiko Takeuchi**

Chair, Japan National Committee of FE, Vice President of Science Council of Japan, President of IGES

**Prof. Fumiko Kasuga**

Director of the FE Global Hub, Tokyo

**Dr. Wang Qinxue**

National Institute of Environmental Studies, Tsukuba

**15:30 - 16:00 Coffee Break @ Conference Room 6-C (6F)**

---

**16:00 - 17:30 Parallel Sessions**

---

**Parallel Session B5 [Theme 1 (2)] @ Conference Room 5-A (5F)**

Co-chairs: **Prof. Hiroshi Yoshino**  
Professor Emeritus  
Tohoku University, Japan

**Dr. Suvdantsetseg Balt**  
Senior Officer  
Division of International relation and cooperation, the Mongolian Academy of  
Sciences, Mongolia

**Role of Regional Collaboration in Science and Technology Research  
for Achieving SDGs: Perspectives from the JASTIP Experience**

**Yasuyuki Kono**  
Professor, Kyoto University, Japan

**Adaptable Infill for the Durable and Sustainable Japanese Housing**

**Kazunobu Minami**  
Professor, Shibaura Institute of Technology, Japan

**Indoor Air Quality and Health in Residential Buildings in Major Cities  
of Indonesia  
A case study of Surabaya**

**Tetsu Kubota**  
Associate Professor, Graduate School for International development and Cooperation,  
Hiroshima University, Japan

**Study on Thermal Environment of Temporary Shelters Built in Nepal  
after Massive Earthquake 2015**

**Rita Thapa**  
PhD, Tokyo City University, Graduate School of Environmental and Information Studies,  
Japan

**Solution-Oriented Interdisciplinary Approach for Implementation of  
SDG's in Mongolia**

**Suvdantsetseg Balt**  
Senior Officer, Division of International relation and cooperation, the Mongolian Academy  
of Sciences, Mongolia

## **Study on a Sustainable Method of Pro-Environmental Behavior Habituation**

**Shinnosuke Adachi**

Graduate Student, Waseda University, Department of Architecture, Japan

## **The Transboundary Water Resource Management in Lower Mekong Basin: A Cooperative Game Approach**

**Lan Phuong Nguyen**

PhD Student, Graduate School of Global Environmental Studies, Kyoto University, Japan

### **Parallel Session C5 [Theme 5 (2)] @ Conference Room 5-C (5F)**

Co-chairs: **Prof. Masako Yoneda**

Professor

Keio Advanced Research Centers, Keio University, Japan

**Prof. Mohd Raihan Taha**

Director

Institute for Environment and Development (LESTARI), Universiti Kebangsaan Malaysia, Malaysia

## **Stronger Mega Cities for the Next Major Earthquake**

**Akira Wada**

Professor Emeritus, Tokyo Institute of Technology, Japan

## **Developing an Early Warning System of Dzud (cold-season disaster) in Mongolia**

**Masato Shinoda**

Professor, Graduate School of Environmental Studies, Nagoya University, Japan

## **Loss and Damage from Flooding in the Pahang Region, Malaysia**

**Mohd Raihan Taha**

Director, Institute for Environment and Development (LESTARI), Universiti Kebangsaan Malaysia, Malaysia

## **Building a Connection between Scientists and Local Community after the 2014 Eruption of Ontake Volcano**

**Koshun Yamaoka**

Professor, Graduate School of Environmental Studies, Nagoya University, Japan



## **Heat Stress Assessment for Outdoor Workers with Low-cost Sensors for Heat Adaptation Policies**

**Shih-Chun Lung**

Research Fellow, Academia Sinica, Taiwan

## **On-Demand Image Acquisition System by Micro-Satellite Constellation under International Consortium**

**Yukihiro Takahashi**

Professor, Hokkaido University, Japan

---

### **16:00 - 17:30 Committee of Science and Society and Young Academy of Japan Session @ Council Room (2F)**

---

#### **Session Organizers**

Chair: **Dr. Miyoko O. Watanabe**

Vice President, SCJ & Deputy Executive Director, Japan Science and Technology Agency

Panel discussion facilitator:

**Prof. Taikan Oki**

Professor, the University of Tokyo

Commentators:

**Prof. Kaoru Endo**

Professor, Gakushuin University

**Prof. Kazuyoshi Nishijima**

Associate Professor, Disaster Prevention Research Institute, Kyoto University

#### **Presenters**

Lectures:

#### **Quest for coexistence between human and wildlife**

**Dr. Juichi Yamagiwa**

President of SCJ & President of Kyoto University

#### **Living with natural disasters**

**Prof. Dwikorita Karnawati**

Former President, Gadjah Mada University, Indonesia

## **Beyond SDGs - Education & The 4th Industrial Revolution**

**Prof. Sharifah Zarina Syed Zakaria**

Institute for Environment and Development (LESTARI), Malaysia

## **Visual Communication Design for Language Revitalization**

**Ms. Fumi Yamamoto**

Designer/illustrator, PhD student of Kyoto City University of Arts

### **Commentators:**

**Prof. Dawnhee Yim (Korea)**

Member of the National Academy of Sciences, Republic of Korea

**Ms. Mriduchhanda Chattopadhyay (India)**

PhD student in Economics of Waseda University

**Dr. Michiharu Nakamura**

Senior Advisor of JST, A member of UN 10-member group

**Prof. Kaoru Endo**

Prof. Kazuyoshi Nishijima

# Day 3

## Friday, 7th December

8:30 - **Registration**

---

9:00 - 10:30 **General Assembly @ Assembly Hall (1F)**

---

SCA member organizations only

9:00 - 10:30 **Parallel Sessions**

---

### Parallel Session B6 [Theme 1 (3)] @ Conference Room 5-A (5F)

Chair: **Prof. Hiroyuki Yamamoto**  
Professor  
Nagoya University, Japan

#### **Geophysical Methods in Determining Energy Reserves of Geothermal for Sustainable Development**

**Anastasia Neni Candra Purnamasari**  
Lecturer, Universitas Proklamasi 45 Yogyakarta, Indonesia

#### **Growth Stresses and Related Problems in Tropical Fast-Growing Species**

**Hiroyuki Yamamoto**  
Professor, Nagoya University, Japan

#### **Resources-Energy-Development Nexus and its Implications for Achieving the SDGs in Asia**

**Benjamin Craig McLellan**  
Associate Professor, Kyoto University, Graduate School of Energy Science, Japan

#### **Thermal Characterization of Portable Micro-Gasifier Using Biomass Waste as Fuel and Its Economic**

**Wira Widyawidura**  
Director, Center for Energy and Environmental Studies, Universitas Proklamasi 45, Indonesia

## **Fabrication and Characterization of Polypyrrole, Carbon Black and Carbon Nanotubes for Abaca and Banana-Cotton Textile-Based Supercapacitor Electrodes**

**Angelico Nichole Meneses Tolentino**

MS Chemistry Student, University of Santo Tomas, Philippines

## **The Framing Effect of Energy Labels: A Study of Energy Label Designs' effect on Correct Evaluation of the Energy Saving performance of Buildings**

**Mieko Fujisawa**

Professor, Kanazawa university, Japan

### **Parallel Session C6 [Theme 5 (3)] @ Conference Room 5-C (5F)**

Co-chairs: **Prof. Akira Wada**

Professor Emeritus

Tokyo Institute of Technology, Japan

**Dr. Rilya Rumbayan**

Lecturer and Researcher

Manado State Polytechnic, Indonesia

## **Linking post-disaster survey and disaster risk reduction - Activities of Japan Association for Wind Engineering -**

**Kazuyoshi Nishijima**

Associate Professor, Disaster Prevention Research Institute, Kyoto University, Japan

## **Road Geohazard Risk Management using Adaptive Approach for meeting Country's Capacity**

**Kazushige Endo**

Senior Staff, Minister's Secretariat, Ministry of Land, Infrastructure, Transport and Tourism, Japan

## **Diagnostic of Concrete Performance for Earthquake Resistance Buildings and Infrastructure Using Infrared Thermography**

**Rilya Rumbayan**

Lecturer and Researcher, Manado State Polytechnic, Indonesia

**Secondary Analysis of the Questionnaire Survey on Scientific Research related to the Great East Japan Earthquake Disaster by Science Council of Japan - Multivariate Analysis on Data Sharing and Fund Shortage -**

**Keiichi Sato**

Associate Professor, Senshu University, Japan

**Parallel Session D3 [Theme 2] @ Council Room (2F)**

Chair: **Prof. Kaoru Arakawa**

Professor

Dean of the School of Interdisciplinary Mathematical Sciences, Meiji University, Japan

**Big Data Analysis of the Urban Heat Island Effect on Human Health Problems in Urban Central Tokyo**

**Kayoko Yamamoto**

Associate Professor, University of Electro-Communications, Japan

**Vaccine Development for Jembrana Disease Control in Bali Cattle: First Field Trial**

**Endang Tri Margawati**

Researcher, Research Centre for Biotechnology - LIPI, Indonesia

**Field Survey on Impact of Living Environments on Brain, Cardiovascular, Respiratory and Locomotive system and Co-Benefit Evaluation of Disease and Long-Term Care Prevention**

**Toshiharu Ikaga**

Professor, Keio University, Japan

**Healthy Cities in Asia: urban planning and governance addressing sustainable development goals (SDGs)**

**Keiko Nakamura**

Professor, Tokyo Medical and Dental University, Japan

**10:30 - 11:00 Break**

---

## 11:00 - 12:00 **Closing Session @ Assembly Hall (1F)**

---

MC: **Prof. Koji Miyazaki**  
Professor Emeritus  
Tokyo University of Foreign Studies, Japan

### **Declaration of SCA statement**

**Prof. Hiroshi Yoshino**  
Secretary General / Treasurer of SCA

### **Greeting from President-Elect**

**Prof. Dr. Xi Wang**  
Vice President, China Association for Science and Technology  
Director General, Shanghai Institute of Microsystem and Information Technology, Chinese Academy of Sciences

### **Flag Ceremony**

Handing over the SCA Flag to the Host of the next Conference

### **Closing Remarks**

**Prof. Kazuhiko Takeuchi**  
Vice President, Science Council of Japan

## 12:00 **Adjourn**

---

Participants other than those who do not participate in the study tour

## 12:00 - 13:00 **Lunch**

---

Study tour participants only

## 13:00 - 18:00 **Study Tour**

---

International participants only and advanced reservation is required. (Reservation is not possible on the day.)

# Poster Session 1

## 13:00-14:00, Wednesday, 5th December

### Conference Room 6-A (6F)

[Theme 2]

ID No.	Presenter	Title
2-13-P	<b>Gerwin Louis Tapan Dela Torre</b> Institute of Pharmaceutical Sciences, National Institutes of Health, University of the Philippines Manila	Premna odorata and Psidium guajava ethanol extracts as preservatives in suspension
2-14-P	<b>Kimiko Nakayama</b> Kobe University	Relationship between weak consciousness concerning Community Organization Activities and personal factors of Japanese Public Health Nurses
2-15-P	<b>Hisaya Tanioka</b> Tanioka Clinic	In vivo Trabecular Architecture of the Vertebrae: Analysis of Aging, Gender, and Smoking
2-16-P	<b>Angelina Alampay Atienza</b> College of Dentistry, University of the Philippines Manila	Antimicrobial action of Calcium Hydroxide, Chlorhexidine, Caesalpinia pulcherrima and their Combination on Enterococcus faecalis and Candida albicans
2-17-P	<b>Nodoka Yamauchi</b> France Bed Co.,Ltd.	Design Principles of products for active seniors
2-18-P	<b>Sam Dominic Aquino Binag</b> Research Center for the Natural and Applied Sciences, University of Santo Tomas	Are Herbal Medicines SAFE? The Truth Revealed for Blumea balsamifera (L.) DC. (Sambong) and Ehretia microphylla Lam. (Tsaang-gubat) Derived Medicinal Products
2-19-P	<b>Hiroshi Kohori Segawa</b> Kyoto University graduate school of public health	Exploring prevention measures of Non-Communicable Diseases according to Gross National Happiness in Bhutan: 1st-Phase Comprehensive Qualitative Study
2-20-P	<b>Nobuo Nishi</b> National Institute of Health and Nutrition, National Institutes of Biomedical Innovation, Health and Nutrition	Scenarios for sustainable medical and long-term care expenditures for the elderly in Japan

**[Theme 3]**

ID No.	Presenter	Title
3-06-P	<b>Masanori Mori</b> Nagoya University Graduate School of Bioagricultural Sciences and School of Agricultural Sciences Research center for Future Earth	The influence of the forest fires occurred in agricultural concessions on local
3-07-P	<b>Rina Hidayati Pratiwi</b> Universitas Indraprasta PGRINutrition	Molecular Identification of Endophytic Bacteria from <i>Neesia altissima</i> Bl. (Malvaceae) Antagonistic to Diarrhea-Causing Bacteria

**[Theme 5]**

ID No.	Presenter	Title
5-16-P	<b>Ze Liu</b> Toyo University	Prediction of heatstroke occurrence & simulation of heat acclimation in labor working environment on Asian region
5-17-P	<b>Satoru Nishikawa</b> Nagoya University Disaster Mitigation Research Center	Ichi-Nichi-Mae Project' for Disaster Awareness & the Possibility of Technical Transfer to other Disaster-Prone Countries ; 'If We were Back the Day before the Disaster, How can We better Prepare?'
5-18-P	<b>Campina Illa Prihantini</b> Bakti Bangsa Institute of Economic Science Pamekasan	Estimating The Preventive Expenditure Based On Flood In Dalpinang Village, Sampang Regency As Effort Reducing The Effect Of Flood
5-19-P	<b>Haruo Hayashi</b> National Research Institute for Earth Science and Disaster Resilience	Exploring the possibility of online synthesis system for disaster risk duction as a tool for promote "consilience" of knowledge and practice
5-20-P	<b>Keiko Tamura</b> Niigata University	Constructing the Concept of 'Build Back Better' for the Development of Sustainable Society
5-21-P	<b>Yusuke Amano</b> Ministry of Land, Infrastructure, Transport and Tourism, Japan	The way for Science and Technology community to promote investment in Disaster Risk Reduction
5-22-P	<b>Kaoru Takara</b> Kyoto University	Integration of Knowledge to Estimate Probable Maximum Flood Events



## Poster Session 2

### 13:00-14:00, Thursday, 6th December

### Conference Room 6-A (6F)

[Theme 1]

ID No.	Presenter	Title
1-18-P	<b>Syamsul Maarif</b> Proklamasi 45 University	Analysis of the effect of temperature and mixture of raw materials on pyrolysis process with single retort-rocket stove technology to charcoal briquette characteristics
1-19-P	<b>Muchamad Malik</b> Proklamasi 45 University	An experimental study on the performance of Savonius wind turbines related to blade variation
1-20-P	<b>Erina Kojima</b> Nagoya University, Graduate school of Bioagricultural Science school of Agricultural Science Nagoya University, Future Earth Research Center	Wood engineering aiming to integrate forest management and timber utilization (1) Supply and demand balance of forest resources based on carbon balance
1-21-P	<b>Kazuhiro Fukuyo</b> Yamaguchi University	Correlation and Causality between Economic Growth and Energy Consumption in the Asian Landlocked Countries
1-22-P	<b>Weijun Gao</b> Qingdao University of Technology, China and The University of Kitakyushu, Japan	Situation of Energy Use and Environment in Rural residential Buildings with Tourism Business of Zhejiang, China
1-23-P	<b>Muhammad Noviansyah Aridito</b> Department of Environmental Engineering, Proklamasi 45 University Yogyakarta (UP45)	Characterization of Product from Pyrolysis Sawdust Briquette based on Variation of Heating Rate and Gas Suction Rate Using Rocket Pyrolizer and Plastic Oil Burner
1-24-P	<b>Celine Grace Vicencio Causapin</b> The Graduate School, University of Santo Tomas	Multi-walled Carbon Nanotubes and Nickel Hydroxide on Banana-Polyester Woven Fabric as Supercapacitor Electrode Material: Preparation and Characterization
1-25-P	<b>Mriduchhanda Chattopadhyay</b> Graduate School of Economics, Waseda University	Willingness to pay for lowering the risk from dirty cooking energy: A case study of rural Indian households
1-26-P	<b>Shinichi Taniguchi</b> Waseda University	Effects of power-exchange openness to renewable energy on its penetration and social welfare
1-27-P	<b>Yasuko Yoshino</b> Nihon Univ.	Environmental Living Conditions and the Concept for a Bio-village in Sunan Yugur Autonomous County in China
1-28-P	<b>Mishan Shrestha</b> Tokyo City University, Yokohama	Study on thermal comfort in naturally ventilated higher secondary school buildings in Nepal

**[Theme 4]**

ID No.	Presenter	Title
4-06-P	<b>Haruka Ono</b> Toyohashi University of Technology	The Impact of Land Tenure Systems on Informal Urban Development in African Cities: A Comparative Study of Lusaka, Dakar and Nairobi
4-07-P	<b>Xianqun Guo</b> Kozo Keikaku Engineering Inc.	Reconstruction of Kumamoto Castle in 1960, Damages at 2016 Earthquakes and Restoration for Future

**[Theme 8]**

ID No.	Presenter	Title
8-07-P	<b>Satoshi Araki</b> University of Oxford	Are Skills the Key to Economic Success? Re-examining the Relative Impacts of Skills and Credentials on Occupations and Earnings
8-09-P	<b>Mizue Y. Kissho</b> Tokyo University of Science Research Center Math and Science Education, SSM	Science Education towards SDGs Society ~Marie S Curie as an Innovative Science Educator~
8-10-P	<b>Akinori Yamabe</b> Jichi Medical University	Learning SDGs for University Students in Japan

**[Theme 9]**

ID No.	Presenter	Title
9-07-P	<b>Hoang Ngan Giang</b> National Graduate Institute for Policy Studies	Micro Level Behavior toward Technological Upgrading for Domestic Market
9-08-P	<b>Kunihiro Maeda</b> Utilization of Digital Information Research Department, JIPDEC	The Normative "Platform as a Service" for SDGs Ecological Economy - Beyond the antagonism of "the ethics of market" and "the ethics of governance"
9-09-P	<b>Somnath Sharma</b> The University of Tokyo	An Analysis of Household Participation in the Formal and Informal Credit Sectors in India

**[Theme 10]**

ID No.	Presenter	Title
10-07-P	<b>Satoko Mori</b> Meisei University	Dilemmas and Challenges of Civil Society over SDGs 6: The Case of the Water Justice Movement in Asia
10-08-P	<b>Hezri A. Adnan</b> Center for Southeast Asian Studies (CSEAS), Kyoto University	The Sustainability Transition of Rice Cultivation in Northeast Thailand